



AAKRITI INTERIOR PROFILE

Manufacturing & Designing

AAKRITIDECOR.COM



Aakriti is a luxury Architecture Interior and furniture house that has been settled within the hills of uttrakhand in the valley of dehradun for over a decade now. Now in Delhi as well, our core principle is creativity inspired by nature and the natural.





MRS. AKANKSHA SINHA

Principal Designer
Staffordshire university, U. K



MS. TANVI SINHA

Creative Development,
OP JGU



MR. KRISHAN KURIYAL

Senior Architect
IIT ROORKEE

OUR CLIENTS



GODREJ



GLOBUS



DEHRADUN
AIRPORT



ANTARA BY MAX
GROUP



POLICE HEAD
QUARTERS



IKSANA
WORKSPACES



JINDAL



PACIFIC INDIA



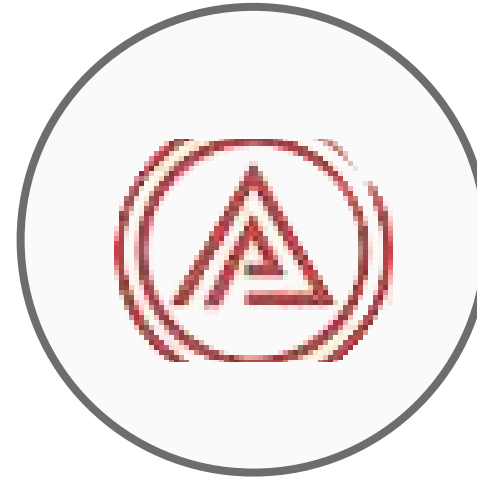
EXCENTIA TATVA



UTTARAKHAND
SADAN



HAB PHARMA



AHLUVALIA
CONTRACTORS



CPL INDIA

Where function meets finesse, the AAKriti Perspective LLP office is a living canvas of timeless design and purposeful minimalism. Every line, texture, and volume is curated to echo the studio's belief in spaces that breathe, inspire, and connect. With its open flow, earthy materials, and quiet details, the office isn't just a workspace—it's a reflection of thoughtful architecture that nurtures creativity, encourages collaboration, and celebrates simplicity with soul.



DEHRADUN STUDIO

4, Purukul Road, Musoorie Road, Mussoorie Rd, behind Goli Restaurant on, Dehradun, Uttarakhand
248001





DELHI OFFICE

01

CLocated at Pillar No. 184,
Metro Station Arjan Garh, near
Aya Nagar, New Delhi – 110047,

02

Client-Centric Innovation
With a sharp focus on
craftsmanship and personalized
detail, Aakriti merges design
innovation with tailored
solutions to bring each client's
vision to life.

03

Creative Hub in Delhi
Located in the heart of the
capital, Aakriti's Delhi office
serves as a dynamic center for
architecture, interior design,
and bespoke luxury furniture
solutions.

04

Timeless Design Philosophy
Renowned for blending
timeless aesthetics with
functional elegance, Aakriti
delivers designs that are both
sophisticated and purposeful

Where Craft Meets Precision

The AAkriti Perspective LLP factory is the heart of our creative process—a space where vision transforms into tangible form. Designed for efficiency and equipped for excellence, the factory brings together skilled craftsmanship and advanced tools to realize each design with accuracy and soul.



DEHRADUN FACTORY



THE HOUSE IN THE HILLS

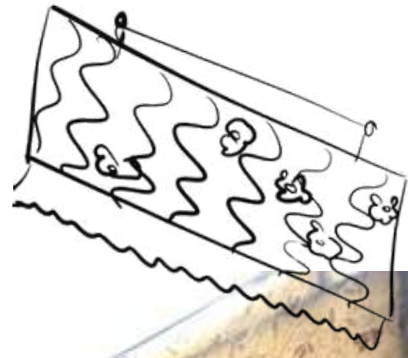
Set against the scenic backdrop near Mussoorie, this residence is a contemporary interpretation of the traditional Uttarakhandi home. Built entirely in exposed brick, the structure celebrates natural materials and passive design. The colonial influences—seen in the tall white columns, deep verandahs, and sloped gable roofs—blend seamlessly with local stone elements and wooden detailing. The double-height ceiling in the living space creates a sense of openness and airiness, while the carefully landscaped front lawn with geometric grass inlays offers a graceful transition between built and natural environments. A timeless home rooted in context, yet bold in presence





The house in the hills is an experience in bringing nature inside, and bringing different parts of the country inside. The house follows the traditional exposed brick colonial style. seen across dehradun, such as in the FRI building. The living room is costal with ceiling clad with local deodar that open up to a skylight illuminating the space. The dining is paritioned by intricately carved wooden pillars that have more stories the more you see them. The outside rain catchers (featured on the right) act as a beuatiful drainage system- architecturally sound while being incredibly stylish.

The large upholstered cloth on the ceiling is actually a *fan* - fully mechanised and made in the style of old hand held fans



The costal blue is a refreshing touch to work in the kitchedn with and opens directly to the vegetable garden



The drainage system is maded with a fully copper drain pipe, with a rain chain attached to the same. This is traditionally a japanesed style- done in a custom bespoke way.



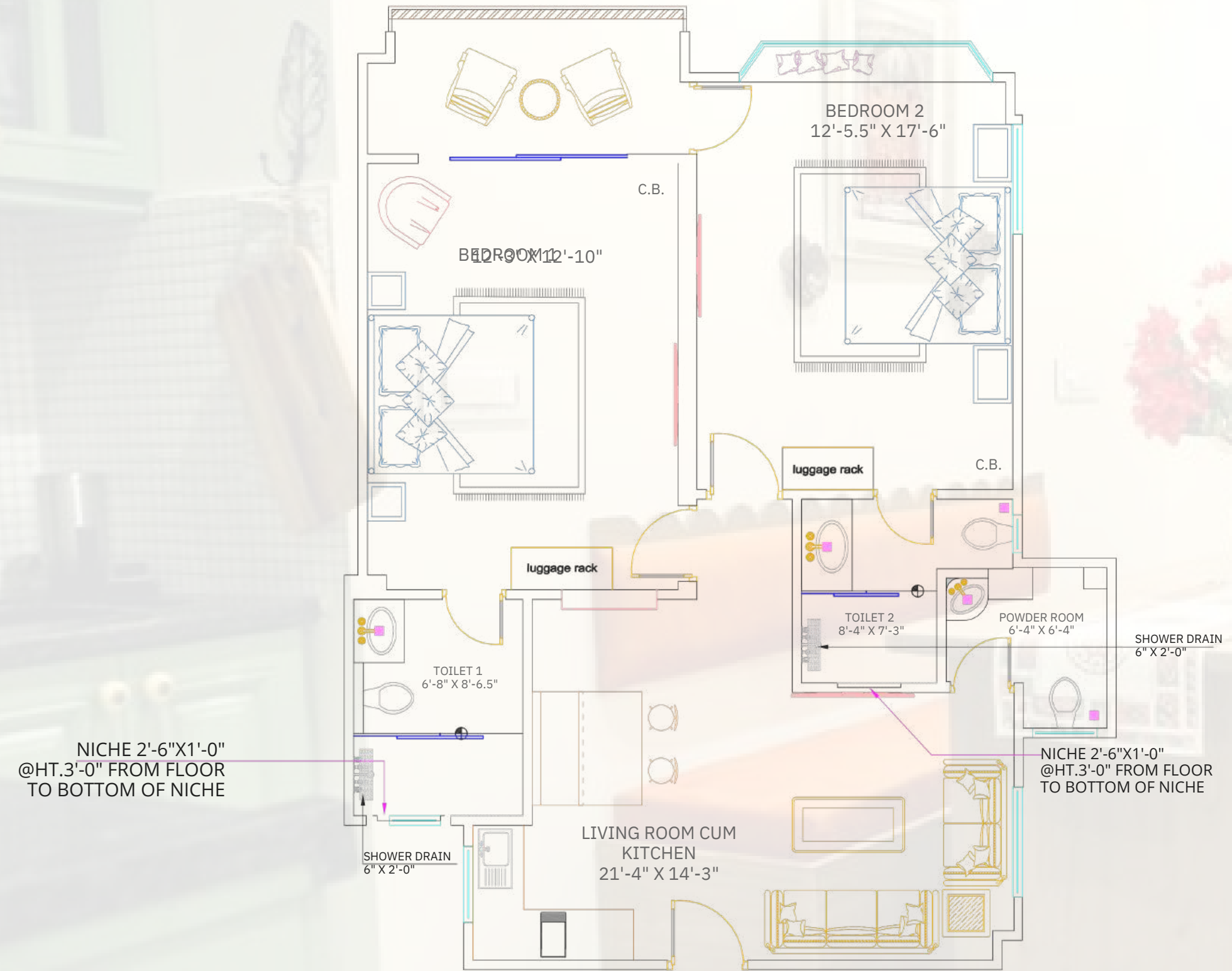
Luxury airbnb in Aloha by the Ganges

This premium Airbnb, perched above the Ganges in Rishikesh, blends cozy charm with quirky details and luxurious finishes.

The home features an open kitchen seamlessly integrated into the drawing room, ideal for social gatherings. A custom openable coffee table, exposed wooden rafters, made with a mix of solid teakwood, white oak and deodar furniture which gives the space a distinctive character.

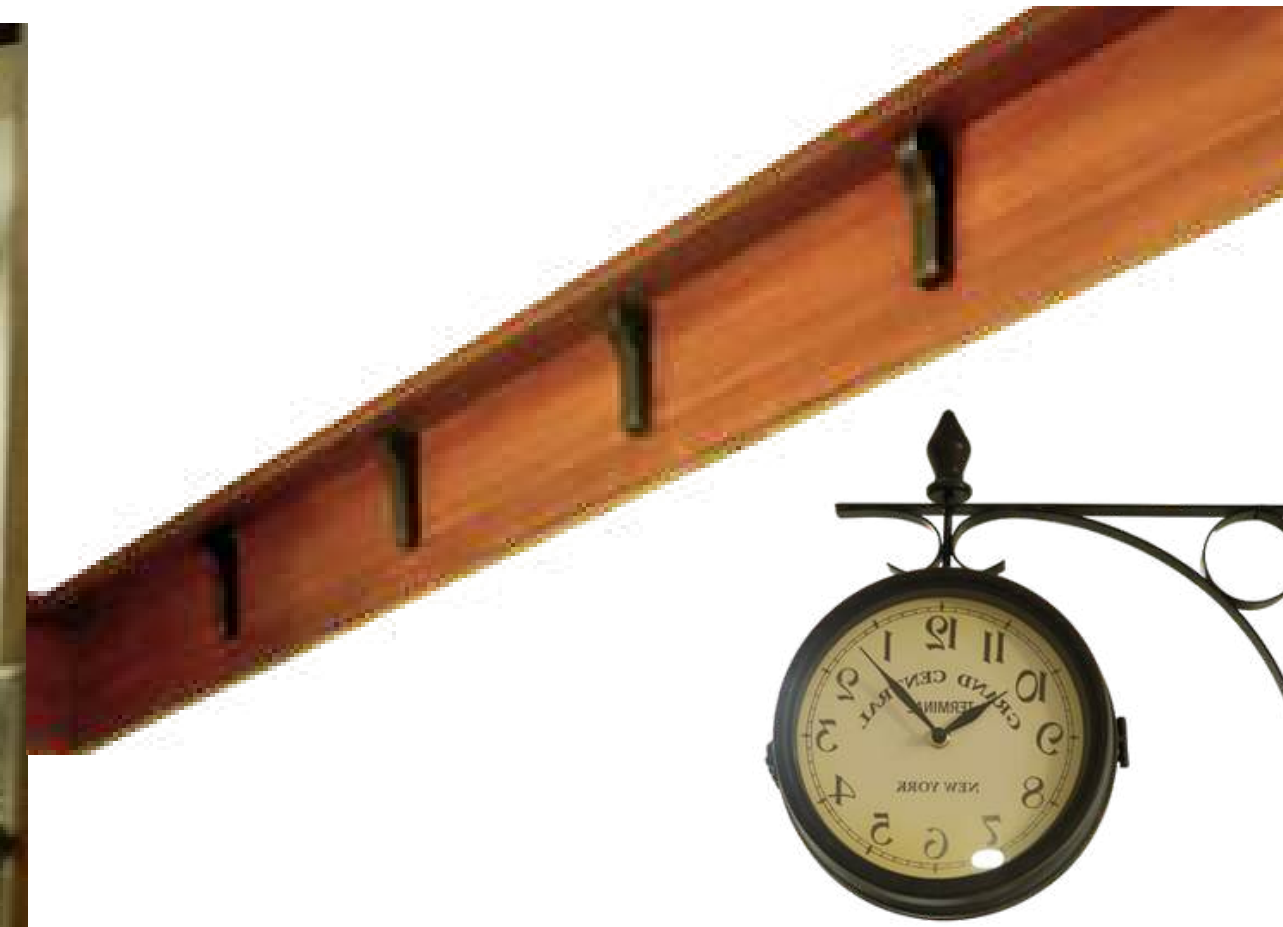
Every detail, from the playful layout to the refined materials, has been thoughtfully curated to create a stay that feels both personal and indulgent.





LAYOUT PLAN


The layout of the Rishikesh Airbnb is a study in balance—compact in footprint, yet spacious in experience. Every square foot is optimised for comfort, with an open kitchen and living area at the core, designed to encourage interaction and ease of movement. The bedrooms are neatly tucked away to ensure privacy, while custom furniture and built-in elements reduce visual clutter and enhance usability. Despite its efficient size, the plan offers a luxurious flow, where no space feels compromised and every corner serves a purpose.



A cheerful blend of functionality and quirk, the kitchen-dining space features checkerboard flooring, sage green cabinets, and a pop of orange in the custom-built banquette.

An arched crockery unit, designed to resemble a vintage display, anchors the dining area with charm.

The rafters overhead and teak detailing bring warmth and cohesion to this cozy corner that feels both playful and well put together.



Designed for comfort with a touch of eclectic elegance, the drawing room is anchored by a deep rust sofa and handcrafted teak furniture.

The openable coffee table adds a layer of utility without compromising style.

Wooden rafters border along the ceiling, creating architectural rhythm, while botanical prints and soft lighting contribute to a warm, lived-in vibe. A space where quirk meets quiet luxury.







AAM BAGH RESORTS

A quiet retreat in the middle of a mango orchard, this Uttarakhand farmhouse is built in the Kothi-Banal style. With deodar-clad ceilings, an open kitchen-drawing plan, and nature-inspired interiors, it's where hill architecture meets laid-back, coastal luxury.





A

3D Render- imagining the space



B

The eventual result



A warm and inviting drawing room designed around openness and natural flow. As you enter, a thoughtfully crafted shoe rack and seating-hanger unit offers a practical welcome point.

The space opens up into a seamless kitchen-living layout, where an island doubles as both prep station and casual dining zone.

Framed by large window doors on all sides, the room is constantly bathed in natural light and breezes, offering uninterrupted views of the surrounding mango orchard.

Overhead, a deodar wood ceiling adds warmth and a distinct Himalayan character, tying the space together in quiet, earthy luxury.







The mirror acts dual prupose- it is both the room vanity mirror and also a sliding door.

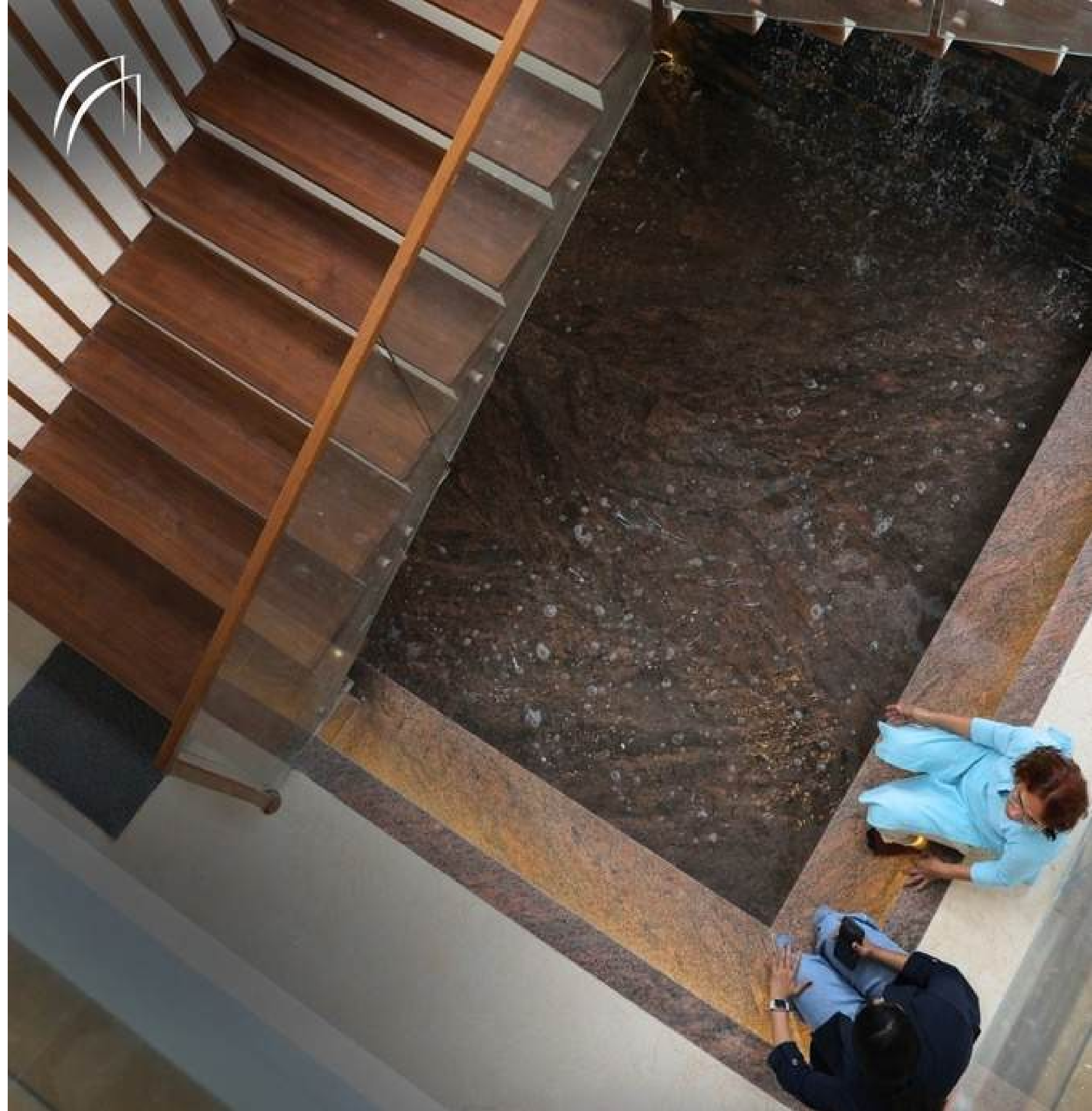
The mechanism on its top works as a rustic slider- aesthetic, and fuctional.

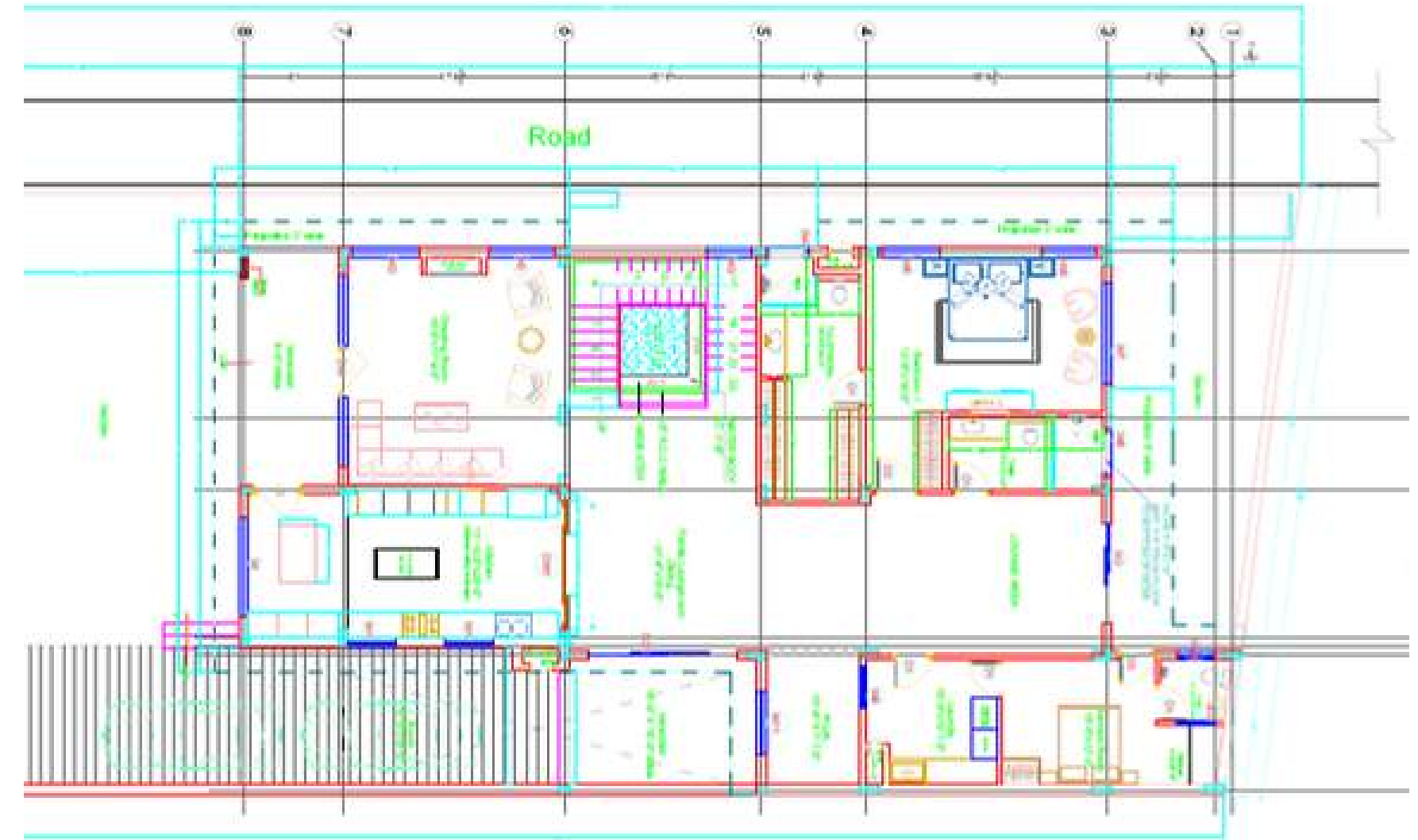




Serene Home

The House of Serenity lives up to its name through a series of thoughtful design choices that create a calming, immersive atmosphere. At its heart is a serene water conversation pit in the drawing room—an unexpected feature that invites reflection and pause. The open kitchen, painted in soft sage green, brings a sense of freshness and fluidity to the space. Expansive windows allow natural light to flood the interiors, framing quiet views and reinforcing the home's connection to its surroundings. Outside, the minimalist facade balances clean lines with understated elegance, making this home feel grounded, open, and timeless.





The 3D render showcases the House of Serenity's clean, modern exterior with a minimalist structure and clear, functional geometry. It highlights how the building sits comfortably in its setting without unnecessary embellishment. The interior floor plan presents a practical and efficient layout, with open connected living areas, a central sunken conversation pit, and well-separated private spaces. Together, they clearly communicate the design intent: a calm, uncluttered home focused on spatial clarity and ease of use.







NATRAJ HOTEL

The Natraj Hotel project involved a complete transformation—spanning architecture, interior design, and turnkey furniture execution. As a long-standing property in the heart of the city, the goal was to modernise the space while preserving its original character.

Architecturally, we redefined the building's envelope, improved circulation, and introduced structural clarity. The interiors were redesigned with a fresh, functional layout that enhanced guest comfort while adding warmth through natural materials and handcrafted details. On the furniture front, every piece—from beds and consoles to café seating—was custom-designed and built in-house to match the language of the space.

This was a project where heritage met modern hospitality, and every layer was approached with care, precision, and purpose.





This 3D render captures a landmark hotel designed to become a defining presence in its city. The architecture is both commanding and timeless, with a strong urban frontage and thoughtful massing that reflects its public importance. As planners, we take a holistic approach — blending architectural vision with deep interior planning, always rooted in the context of place.

Our process begins with understanding our client's intent, their audience, and the experience they wish to create. From there, we shape spaces that feel intuitive, elegant, and purposeful. In this hotel, local materials and craft are woven into both structure and interiors — creating a sense of identity that is luxurious, regionally grounded, and built to last.



The rustic cafe in Natraj Hotel features sofas on wheels, the seat is encased in iron, with comfortable upholstery. It is defined by its raw yet refined material palette, with the coffered ceiling standing out as a key architectural element. Cast in concrete, the ceiling adds both texture and structure to the space. The grid of recessed panels creates depth and rhythm while also improving acoustics in the bustling café environment. This exposed ceiling treatment lends an industrial edge, contrasting the warm tones of the wood and brick below, and tying the entire space together with a sense of deliberate design restraint.



The cafe at Natraj Hotel is defined by its raw yet refined material palette, with the coffered ceiling standing out as a key architectural element. Cast in concrete, the ceiling adds both texture and structure to the space. The grid of recessed panels creates depth and rhythm while also improving acoustics in the bustling café environment. This exposed ceiling treatment lends an industrial edge, contrasting the warm tones of the wood and brick below, and tying the entire space together with a sense of deliberate design restraint.





CEILING - CNC CUT



JHAROKHAS AND FLOWER LOGO



PILLAR TO PILLAR JAALI





EXCENTIA TATVA EXPERIENCE CENTER

Tatva is the experience centre for an ultra luxury housing project, designed to reflect the very essence of refined living. With soaring double-height ceilings, a warm palette of teak and white oak, and a super-premium finish, the space speaks of quiet grandeur.

Every detail, from bespoke furniture to the flow of natural light, was crafted to echo the brand's vision: understated elegance, elevated living.







THE HOUSE IN NEHRU COLONY

A luxurious house, with premium interiors, wooden wall pannelling, gorgeous kitchen, dining, and earthy yet elegant rooms.

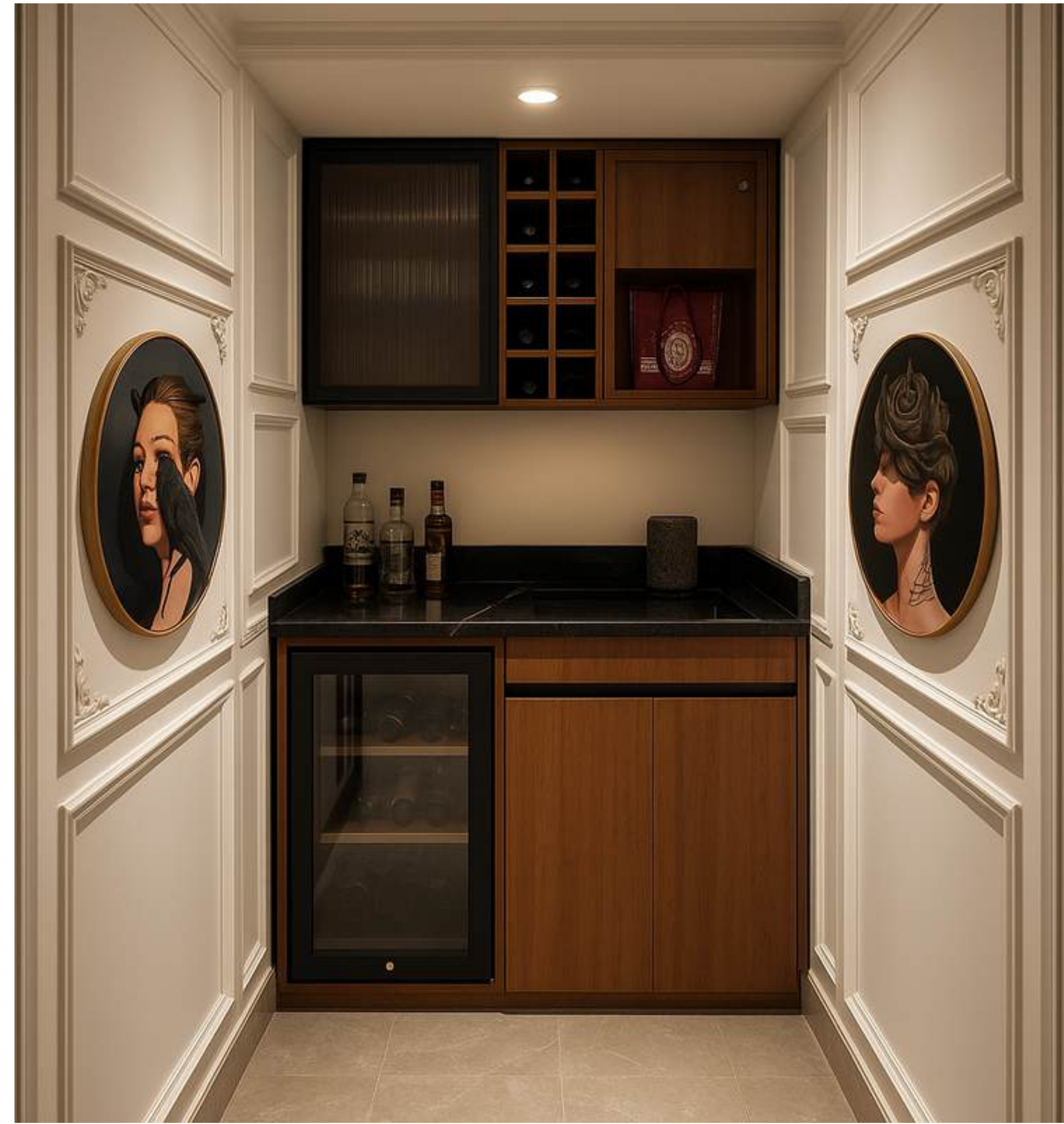




This drawing room is a study in refined luxury. A custom-designed stone wall with integrated illuminated paneling forms a dramatic focal point—its soft backlighting casting a subtle glow across the space. The backdrop of polished Italian marble flooring adds a cool elegance, setting the tone for a space that is both grand and contemporary. Paired with plush, tailored sofas in neutral tones, the setting invites sophisticated comfort. The materials and lighting come together to create a layered, high-end atmosphere that feels both expansive and intimate.



A rich green classic kitchen anchored by a glowing onyx island bar, blending timeless elegance with modern luxury.







MODERN 3BHK







THE LOTUS RESIDENCE







PANACHE VALLEY

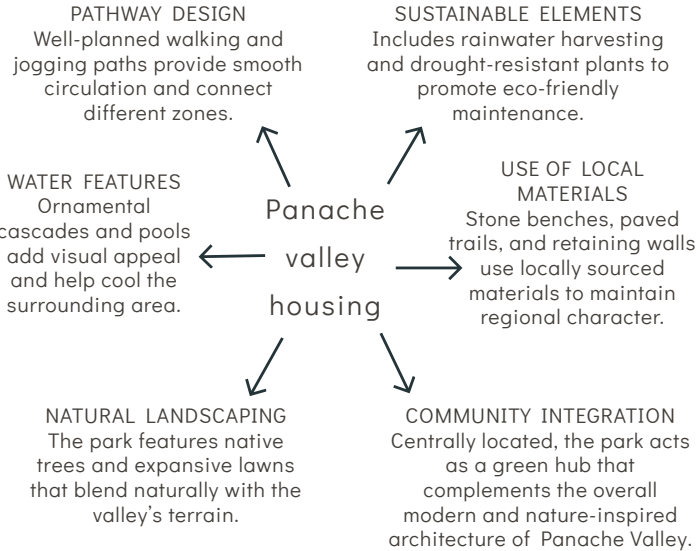
Located in one of Dehradun's most sought-after residential zones, Panache Valley is a large-scale premium villa township for which we executed the complete landscaping scope. Our approach balanced large-format planning with fine detailing—designing lush, functional, and climate-appropriate green zones across individual villas, internal roads, clubhouse areas, and entry points.

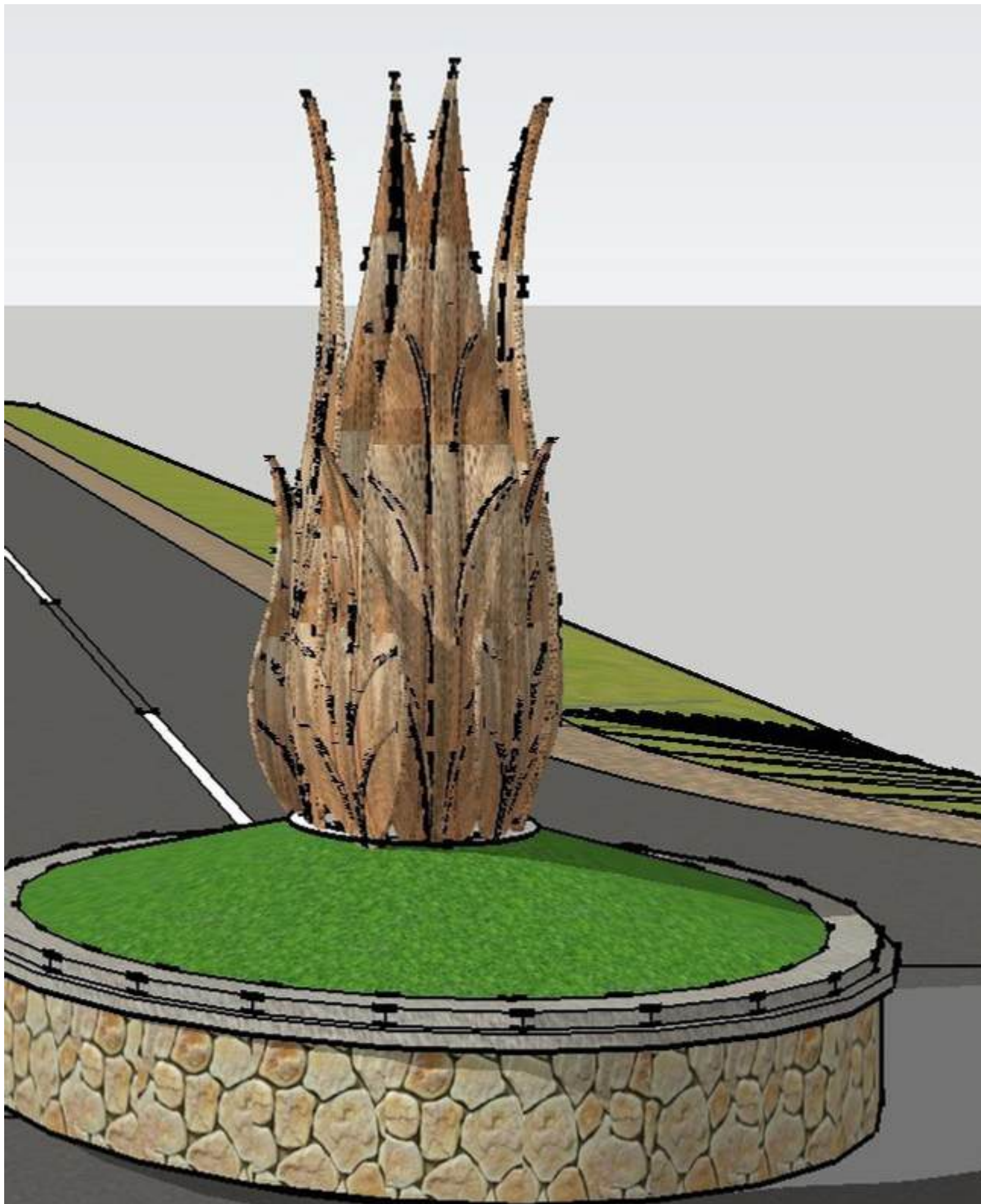
Pathways, plantations, outdoor seating, and water-efficient planting schemes were integrated to elevate the lifestyle offering for residents. Every landscape element was crafted to match the scale and luxury of the architecture, ensuring a cohesive, elegant environment throughout the township.





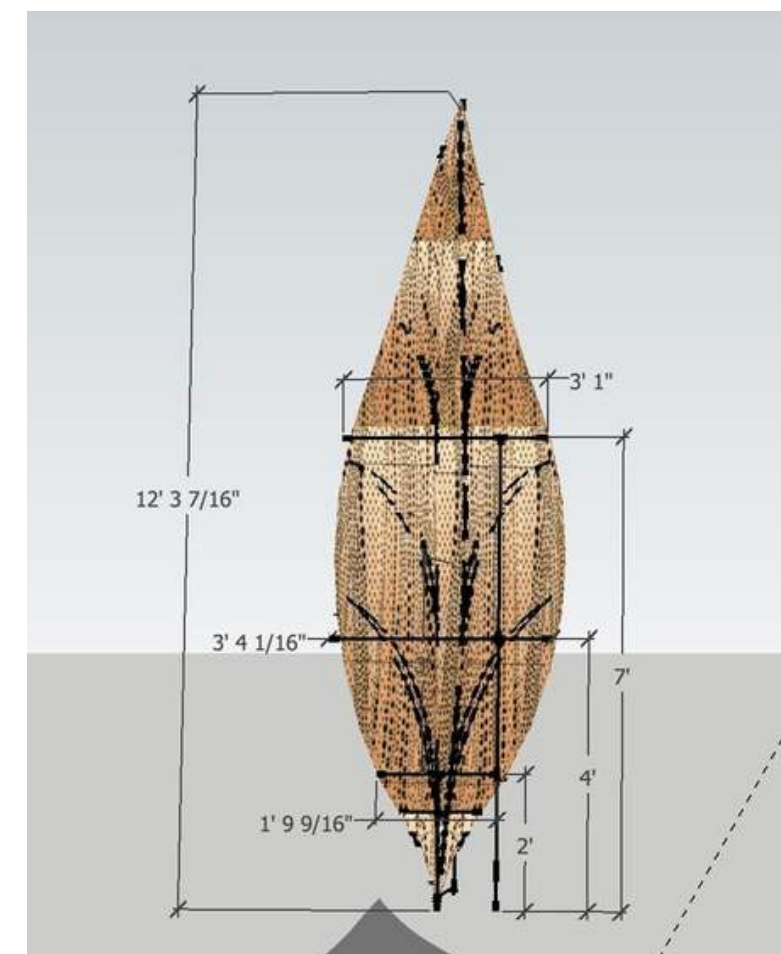
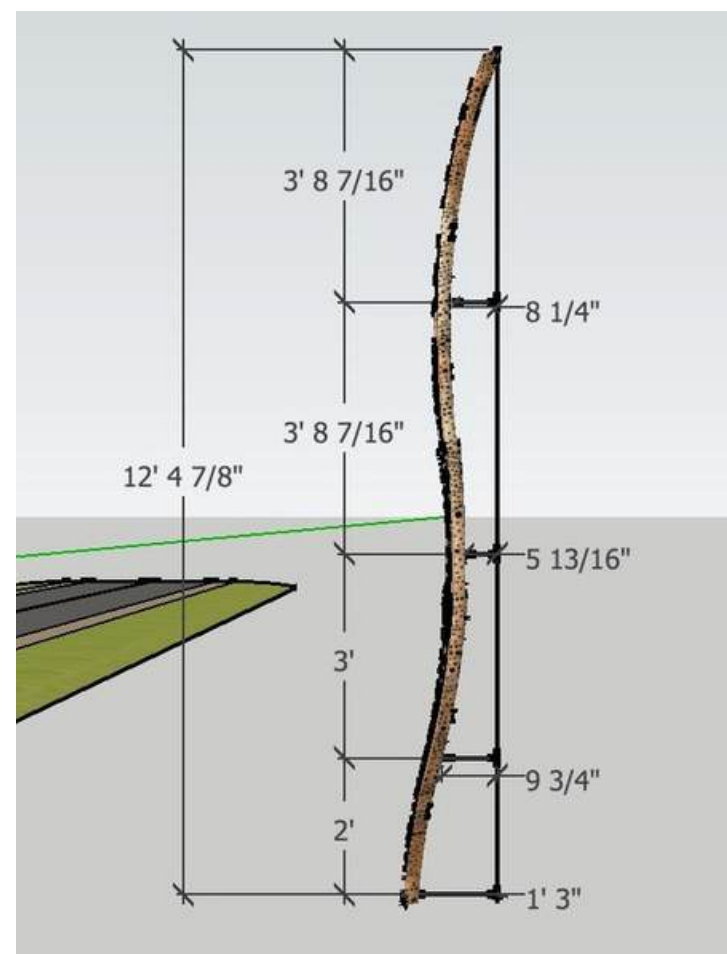
PROJECT : PANACHE VALLEY HOUSING





BRAHMA KAMAL CROSSING

DESIGN AND EXECUTION- MADE ENTIRELY OF COPPER



AND MANY OTHER PROJECTS

RESIDENTIAL | COMMERCIAL

CONTACT US AT

7906202376

9412076600

Tanvi@aakritiarch.com

Akankshasinha@aakritiarch.com

info@aakritiarch.com

@aakriti_crew on instagram

aakritidecor.com

A modern two-story house with large glass windows and a swimming pool in the foreground. The house has a white exterior and a flat roof. The pool is in the foreground, and there are palm trees and other tropical plants in the background. The text "Thank you" is overlaid on the image.

Thank you